

A summary of the impact of the Lincolnshire Wildlife Trust in 2018 - 2019

# Annual Review

## 2018 - 2019



**Lincolnshire**  
Wildlife Trust



# Celebrating 70 years wild and looking to a wilder future

“Surely we can afford to preserve these few remaining wild places. If we do not, we and our descendants will be poorer in mind, in heart and in spirit.”  
The second annual report of the Lincolnshire Wildlife Trust, 1950.

At the end of 1948, Ted Smith (then aged 28) and a small group of dedicated naturalists came together to form the Lincolnshire Wildlife Trust. Seventy years on, the idea has spread to every county in the UK. Here in Lincolnshire we’ve grown from 130 members and two nature reserves in the first year to over 27,000 members and almost 100 nature reserves today.

Our vision is for Lincolnshire and the neighbouring sea and estuaries to be rich in wildlife for the benefit of all. Yet, wildlife is still in decline; we need to do more to put nature into recovery and help people reconnect with the natural world.

With our nature in crisis, it is no longer enough to merely protect areas of wildlife importance. There is a real need to develop a Nature Recovery Network. A network of recreated habitats and wildlife corridors that ensures nature has the opportunity to recover.

This Nature Recovery Network should form part of the Environment Act, promised by the government and supported by the Greener UK coalition – an umbrella body which comprises 14 major environmental organisations including RSPB, National Trust, WWF and Woodland Trust. The current government has pledged to leave the natural environment in a better

condition than it inherited and it is our combined responsibility to see that it, or any future government, honours this commitment.

Thank you for sharing our belief in the importance of the natural world. It is the Trust members, volunteers and staff, whose financial support and on-going enthusiasm allows the charity to continue to prosper and innovate.

David Cohen,  
Chair of the Board of Trustees



Green-winged orchids in Heath's Meadow Nature Reserve, May 2018



Cover image: juvenile bittern at Far Ings, July 2018 (Neil Griffiths)

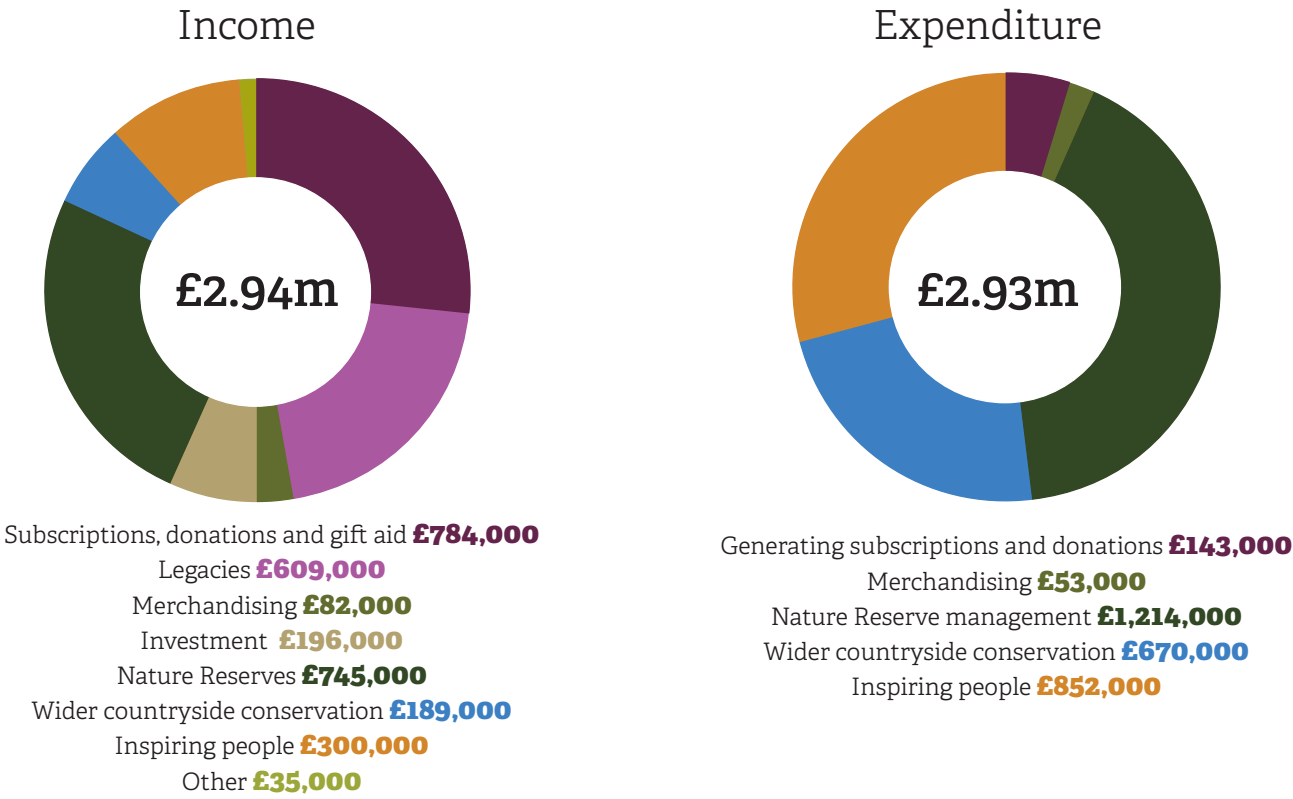


After many weeks of observing feeding flights, with the adult female appearing to be bringing in food for two chicks, we are delighted that we had, for a second consecutive year, successful breeding of bitterns at Far Ings.”  
Simon Wellock, Warden, Far Ings National Nature Reserve

Summary of our income and expenditure for the year ending 31 March 2019. You’ll find more details in our audited Annual Report and Financial Statements at [lincstrust.org.uk/publications](http://lincstrust.org.uk/publications).

During the year, we spent £2.74m on our charitable activities. This represents 92.5% of total expenditure and is spread across nature reserve management, wider countryside conservation and inspiring people. We continue to develop and enhance our reserves as needed and invest in advocacy, education and public engagement.

In addition to a substantial legacy this year, we have also benefitted from a number of other bequests and are indebted to everyone who has supported our work in this way. Over the years gifts in Wills have enabled us to buy new reserves, manage them better and improve visitor facilities whilst building up financial reserves to support ongoing work.





# Nature recovery on reserves and beyond

We care for 3,852 hectares (9,518 acres) of nature reserves across Lincolnshire. We also champion wildlife beyond the boundaries of our nature reserves through targeted work with local authorities, community groups and landowners and through the planning process.

Lincolnshire Wildlife Trust manages almost 100 Nature Reserves and 65 Roadside Nature Reserves across Lincolnshire. These special places are home to some of the county's rarest wildlife as well as a vast array of more common species

They are carefully and sensitively managed for the benefit of wildlife. Creating the right conditions through management has seen the return of bitterns to Far Ings and for the first time since 2014 little ringed plovers fledged at Whisby Nature Park.

Looking after the places in our care also requires investment in infrastructure; the paths and birdwatching signs that gives access to you and all our visitors.

We have a long history of working in partnership; beginning with the pioneering partnership with Lincolnshire County Council at Gibraltar Point which began in 1948 . We believe we can achieve more if we work together.

We are actively involved in forward planning to try to ensure appropriate policies are included in plans, strategies

and development, protecting sites of nature conservation interest and securing biodiversity gains. We try to help decision makers see that solutions with nature are solutions for everyone. By looking after our natural environment we are also looking after the prosperity and wellbeing of the people of Lincolnshire.

## Nature returning to Woodhall Spa Airfield

Five years ago, with the help of funding from WREN, a generous legacy, and from donations, we bought the old airfield on the outskirts of Woodhall Spa. Formerly the home of four brave RAF squadrons during the Second World War but more recently was used as a sand and gravel quarry.

As well as being a large site in itself, the airfield also connected to various nature reserves and habitats that already exist. In this one purchase we were able to create a bigger, better and more joined up area for wildlife.

Grey partridge, lapwing, turtle dove, cuckoo, song thrush, starling, tree sparrow, linnet and yellowhammer have bred most years. Whimbrel and curlew have also been seen feeding on the wet grassland.

Thanks to funding from the Environment Agency a number of small islands were recently created in one of the lakes. By spring 2019, lapwings, avocets, oystercatchers and black-headed gulls were all sitting on eggs.



Lapwings have nested at Woodhall Spa Airfield Nature Reserve

DAVID TIPLING/2020VISION

## Highland ponies helping coastal wildlife

For the first time we have used ponies to graze reserves. After a successful trial at Toby's Hill Nature Reserve, the small group of ponies were moved to Saltfleetby reserve and then to Gibraltar Point where they became a popular attraction as well as an effective conservation management tool.



MATTHEW BLISSETT



Pyramidal orchid



Green hairstreak

“Once they arrived on site at Toby's Hill, they made no fuss and started tucking in to the dead grass straight away, like they had always been there. Their grazing creates a mosaic of short grassland, perfect for a host of associated plants, insects and birds.”  
Matthew Blissett, Outer Humber & Coast Warden

## Working together for positive change

Everyone has a part to play in improving the natural world around them. We work with partners to ensure wildlife benefits wherever possible.

We gave advice to Anglian Water, and North and South Kesteven District Councils, on how to secure gains for wildlife on 55km of pipeline installation from Lincoln to Grantham. Proposed works will cause disturbance to soil. We supported the avoidance wherever possible of sites designated for their biodiversity and geodiversity value. However there is also an opportunity to reinstate soil and vegetation in a way that would be beneficial to wildlife and aid nature's recovery.

Lincolnshire Wildlife Trust cited central and local government policies to call for road verge enhancements along Ermine Street which would link wildflower-rich grassland identified by the 'Life on the Verge' project. Anglian Water and consultant ecologists have responded positively and it is hoped that



RACHEL SHAW

## Caring for special places

Your membership is protecting local wildlife in nature reserves and the wider countryside

3,852

hectares of Lincolnshire's finest countryside were protected and managed as Lincolnshire Wildlife Trust nature reserves

An additional 2.2 hectares (5.5 acres) of SSSI grazing land adjacent to



Far Ings was purchased

8,222 forward planning and development control applications were checked against the Trust's planning criteria, of which 398 were reviewed in detail and 89 were responded to.

## six osprey

nesting platforms were put up on farmland in south Lincolnshire



The process of connecting Upper and Lower Sow Dale nature reserves by buying the land inbetween began early in 2019

## Sow Dale





# Connecting people to the natural world

We engage thousands of people every year, inspiring an interest in the natural world through walks, talks, school visits and at Visitor Centres, helping people feel less isolated from nature.

Education in its broadest sense has always been fundamental to the Lincolnshire Wildlife Trust. Every year we help thousands of children to find nature and increase their confidence outdoors through family activities, regular children's nature groups and schools visiting nature reserves.

We also hold events for all ages and provide a range of voluntary opportunities including through our network of Area Groups.

Our 70th anniversary year was no exception and events were held across the county to celebrate the Trusts formation in 1948. Most involved cake and the display of wildlife themed bunting flags which were sewn, felted and printed by supporters. The most significant event was the launch of Barrie Wilkinson's book 'The Story of Gibraltar Point' which coincided with the

70th anniversary of the establishment of this, the first Trust nature reserve.

We continue to develop relationships with a suite of further education providers including working with the Open University to host Santander funded student placements and provide lecturing support and research opportunities to students at the University of Lincoln.

The three year National Lottery Heritage Fund project, now known as Love Lincs Plants, is underway in partnership with Lincolnshire Naturalists' Union, Sir Joseph Banks Society, University of Lincoln, and the Natural History Museum in London. New audiences have been identified and engagement with higher education establishments, including project partner University of Lincoln, has increased. Through Love Lincs Plants,

over 2,000 historic plant specimens from Lincolnshire have been digitised and added to the national collection at the National History Museum. The oldest specimen recorded so far is corncockle collected in 1817 near Billingborough. Formerly widespread in South & East England, the corncockle is now considered critically endangered.



## Giving back The Lost Words

Over £6,000 was raised through a crowdfunding campaign to give every school in Lincolnshire a copy of 'The Lost Words' by Robert Macfarlane and Jackie Morris.

The book is an inspiring artistic response to the removal of twenty nature words from the Oxford Junior Dictionary including bluebell, acorn and conker. With acrostic spell poems designed to be read aloud and hand-painted illustrations, the book captures the irreplaceable magic of language and nature for all ages.

Run jointly by the Trust and volunteer Harry Whinney, who originally suggested the idea, the campaign had support from FCC Environment and Walkers Books of Stamford.

Deliveries to schools were undertaken by volunteers through our network of Area Groups, along with help from the Rotary Clubs of Lindum, Lincoln and South Holland.



“We have just received the book ‘The Lost Words’ and it looks amazing. We think this book will inspire kids that aren’t interested in nature because the book is very intriguing. Thank you to everyone who raised the money.” Molly and Idris, Year 5, Kidgate Primary School

## Experiencing and learning about nature



“I just wanted to say a huge thank you to you and your team for our awesome trip to Whisby yesterday. The children were buzzing and have done some follow up work today in class which has been great.” Victoria White, Deputy Head Teacher, Radcliffe on Trent Infant and Nursery School



## Helping the garden grow

Local volunteers from Clarence House (Prime Life) in Horncastle have had monthly wildlife garden management sessions helping to develop the Love Lincs Plants botanical demonstration site at the Trust headquarters. Volunteers with learning difficulties and physical challenges have been helping to manage herbaceous borders, our native

hedgerows and a mini meadow plot. Future work includes development of three botanical raised beds, planting of cowslip pot plants and hay raking in late summer. The Trust has recently secured additional funding to enhance the garden through the Lincolnshire Co-op Community Champions Fund.



“The residents at Clarence House love coming to the Trust garden, having a chat and seeing nature up close. Their energy level is always lifted after a morning with the Lincolnshire Wildlife Trust.” Jo, Clarence House supervisor

## Inspiring and empowering

Your membership is helping people build connections with nature that will last a lifetime

27,611

supported our work as members of the Lincolnshire Wildlife Trust

12 Wildlife Watch Groups

gave children the opportunity for monthly wildlife adventures



Nearly 900 people discovered more about dragonflies

at drop-in events at Gibraltar Point

More than 7,200 children visited Trust nature reserves with their school



340 people joined our beach cleans

during the Great British Beach Clean weekend in September



LoveLincsPlants

themed assemblies were delivered in 32 schools to 4,831 children





# Standing up for our coast and seas

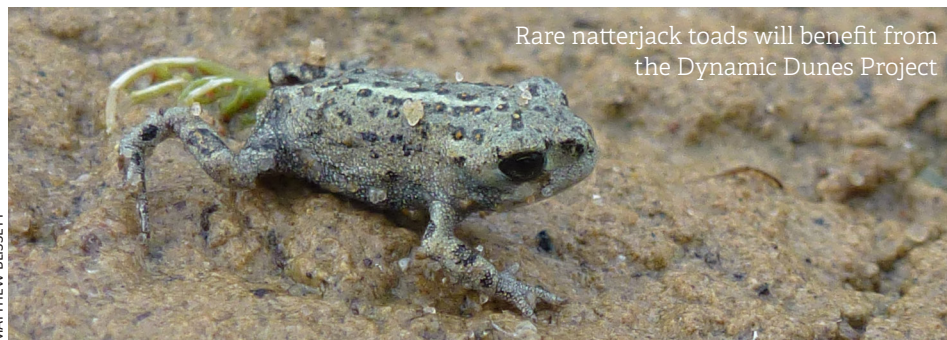
We continue to make a case for the protection and management for coastal and marine habitats.

Achieving Heritage Coast status for Lincolnshire is being progressed with Natural England, East Lindsey District Council and Lincolnshire County Council. Presentations have been given to members of both Councils and approval has been gained. It is hoped the definition of Heritage Coast will be in place and accepted in the planning process during 2019.

The development phase of the Dynamic Dunes project was also completed. It is anticipated this national project will start autumn 2019. In Lincolnshire we will be working with local partners including Natural England to manage some of the county's sand dune habitats and delivering public

engagement along the coast from Cleethorpes to Gibraltar Point.

One of the continuing issues for coastal marine protected areas, such as the Humber Estuary and The Wash, remains recreational disturbance. Unlike other maritime activities these are not regulated in a traditional manner. The Trust is therefore working with both marine partnerships to develop management plans for specific hotspots on the Humber, and through a jointly funded project with the National Trust and The Wash and North Norfolk Marine Partnership on developing understanding of dog disturbance and how to manage it.



Rare natterjack toads will benefit from the Dynamic Dunes Project

MATTHEW BUSSETT

## Lincolnshire Wildlife Trust

Banovallum House, Manor House Street, Horncastle, Lincolnshire LN9 5HF  
01507 526667 info@lincstrust.co.uk Registered charity no. 218895

### Presidents:

Mr G L Trinder ARPS (President) appointed 13.11.18  
Mr B Tear BSc (Vice President)

### Trustees/Directors:

Mr D A Cohen (Chair)  
Mrs J Mellor MSc (Deputy Chair)  
Mr T S Sands (Deputy Chair)  
Dr D A Sheppard BSc PhD (Deputy Chair)  
Mr P Stapleton FCA (Honorary Treasurer) stepped down as Hon Treasurer 13.11.18, resigned as Trustee 16.07.19  
Mr J Purvis BSc FCA (Honorary Treasurer) appointed 13.11.18

Mr M Capper resigned 29.07.19  
Mrs C E Harrison BSc  
Mr C Morrison CSci  
Mr R Oates  
Mrs A Quigley BA  
Mrs S Round BA MSc (Econ)  
Mrs A Rose resigned 18.4.18  
Mr M Smith BSc (Hons) CMIOH appointed 20.10.18  
Mrs B Tyrrel MIBC  
Company Secretary: Paul V Learoyd

### Senior Staff:

Chief Executive: Paul V Learoyd  
Head of Conservation: Tammy M Smalley  
Head of Finance: Sarah J Smith  
Head of Nature Reserves: David R Bromwich



[www.lincstrust.org.uk](http://www.lincstrust.org.uk)

Corporate Membership of the Trust is designed to provide an effective means for companies to demonstrate care for the local environment. The following were Corporate Members during the reporting period:

Able UK  
Aggregate Industries  
Andrew & Co LLP  
Anglian Water Services  
ARH Tucker & Sons  
B A Bush & Son Limited  
Cargill plc  
Cleethorpes Builders Merchants  
Clugston Group Limited  
ConocoPhillips (UK) Limited  
Cray Valley Limited  
Creative Nature  
Crowder & Sons Ltd  
F W Cupit (Printers) Limited  
Fenland Laundries Limited  
Holivans Limited  
Hornsby Travel Services Limited  
J E Piccaver & Co  
J W Ruddock & Sons Limited  
John E Haith Limited  
John Kinch Group  
Jolly Common Caravan Park  
Lincolnshire Co-operative Society Limited  
Mortons of Horncastle Limited  
Natureland Seal Sanctuary  
North East Lindsey Drainage Board  
Page Paper Limited  
Riva Construction  
Rowhire Limited  
SCS Technology Solutions Limited  
Sibelco UK  
Singleton Birch Limited  
TCS UK Spraying  
Truelove Property & Construction  
UK Alternative Energy Limited  
Yara (UK) Limited  
Woodhall Country Park

We are grateful to the following for substantial financial support in 2018/2019 through donations, grants and the sponsorship of projects:

Anglian Water Services  
Centrica  
Defra  
East Lindsey District Council  
Environment Agency  
Esmée Fairburn Foundation  
European Union  
FCC Environment  
Lincolnshire County Council  
Lincolnshire Co-op  
Ministry of Defence  
National Lottery Heritage Fund  
Natural England  
North Kesteven District Council  
RSPB  
RSWT  
Santander  
The Banister Charitable Trust  
Vine House Farm