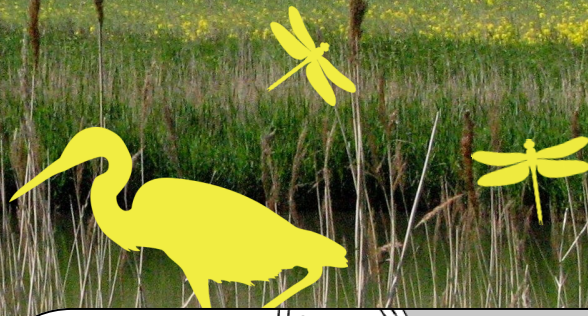


Lincolnshire Wildlife Trust

Sandilands Pit



Location & Access

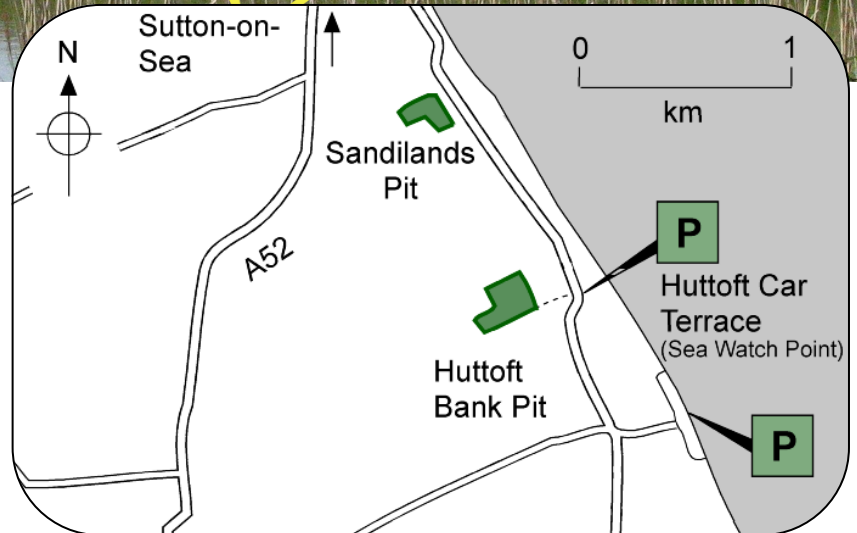
OS: 122 • **GR:** TF 531 802 • 1.50ha (3.80 acres) • Leasehold 1959

Habitat type: Marsh/Wetland

The most northerly of the Sea Bank Clay Pits, the reserve lies on the west side of the coast road just south of Sandilands. From Sutton-on-Sea follow the signpost to Sandilands. Pass Sandilands Golf Club on your left and the reserve will be found on the right. Cars may be parked in the access track (next to Stymie Cottage), but care should be taken not to obstruct the field access.

Description & Management

Excavated for clay to repair the sea bank after the 1953 floods, the flooded pit now supports many duck, especially in winter when snipe are also common. The fringing reeds and scrub provide good nesting habitat for reed and sedge warblers. There are beds of reed sweetgrass, sea couch and sea club-rush. Parts of the grassland are mown each autumn.



Sandilands Pit

GR at E TF 513802

