

GENERAL ROUTE DESCRIPTION

There is a 1.75 mile (2.8 km) circular route around the reserve. The paths are either tarmac or compacted stone, or a mix of stone and grass. The route is mostly level with a few short inclines. It is uneven in places and the paths can be soft after rain.

For detailed information about the slopes and surfaces and to see if the paths are suitable for you please see the map overleaf.

The reserve is managed by the Lincolnshire Wildlife Trust.

There are grazing animals on site so dogs must be kept on a lead at all times.

Please note: The reserve and visitor centre were flooded in December 2013. At present there is a temporary centre but the building of a new centre is due to start soon. For up to date information please go to the Wildlife Trust website (see below).



Lincolnshire
Wildlife Trust

Opening times: daily dawn to dusk

Location: Gibraltar Point, Gibraltar Road, Skegness.

Grid reference: TF 556 580. Post code: PE24 4SU

Car park 1 (P1): As location details above. Tarmac with marked disabled bays. Pay & display.

Car park 2 (P2): Grid reference: TF 558 589.

Post code: PE24 4ST
Compacted stone surface, no marked disabled bays. Pay & display.

Public transport: For more information call the Traveline on 0871 2002233 or visit www.lincsbus.info

Accessible toilets: at Visitor Centre

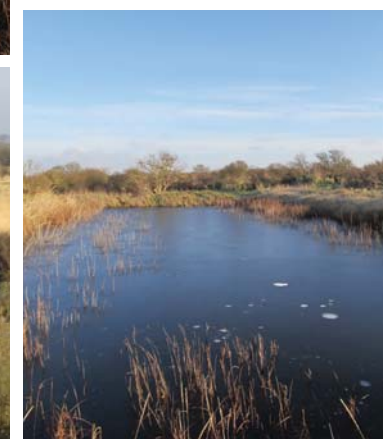
Refreshments: at Visitor Centre

For up to date information please go to the Lincolnshire Wildlife Trust website: www.lincstrust.co.uk

To find more countryside for all sites and information about the Lincolnshire countryside go to www.lincolnshire.gov.uk/countryside



Gibraltar Point National Nature Reserve, Skegness Countryside for all In Lincolnshire



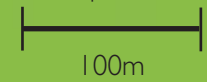
This National Nature Reserve stretches from south of Skegness to the mouth of The Wash, Britain's largest estuary. The coastline here is unique and unspoilt.

There are sand dunes, saltmarsh, marshes and meadows and in turn a wide variety of wildlife. Boards around the reserve will provide more information about the habitats and wildlife.

GIBRALTAR POINT NATIONAL NATURE RESERVE



Map Scale



key

- Compacted stone path
- Tarmac/concrete path
- Stone/grass path - uneven
- Route direction
- Information Board
- Gate
Gate width
- Parking
- Disabled parking
- Seat
- Viewpoint
- Footbridge
- Visitor Centre
- Accessible toilet
- Take care -road crossing
- Bollards - with maximum width between bollards
- Width restriction
80cm = min width
10m = length of restriction
- Steps up
Number steps
Height of each step
- Uphill section
max gradient of slope
length of slope
- Downhill section
max gradient of slope
length of slope
- Bird Hide 1 - door width 100cm
uphill concrete slope to entrance: 1:10 for 4m
- Bird Hide 2,3 & 4
- door width 75cm
- Bird Hide 5 - open - no doors



Only slopes with gradients over 1:25 and cross-slopes over 1:33 are shown on the maps.

Paths are at least 1 metre wide unless shown otherwise.

Guide to gradients and cross-slopes:

- 1:4 25%
- 1:12 8%
- 1:25 4%

